

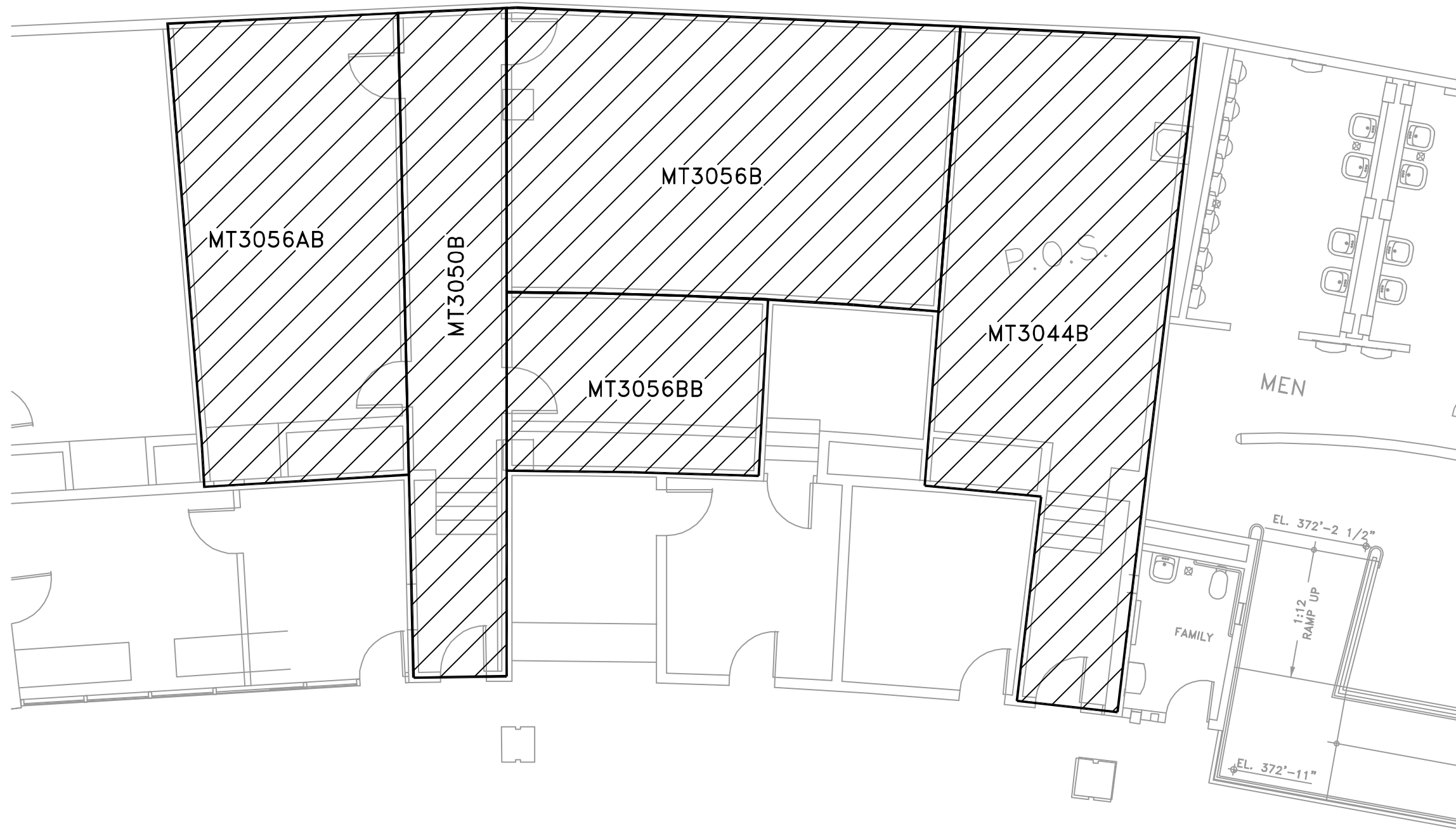
Exhibit A

Airport Management Services, LLC.

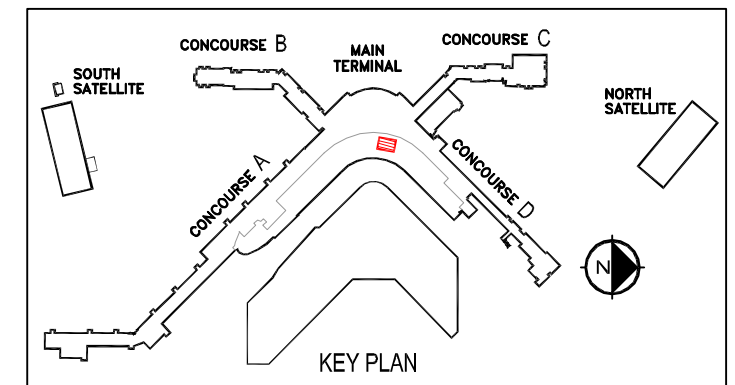
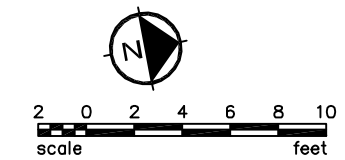
Office Space

Bag Claim Level

Item No. 6a
 Date of Meeting November 11, 2014



2,010 SF



Port of Seattle/Aviation Properties
 Seattle-Tacoma International Airport

BUILDING: MAIN TERMINAL
LEVEL: BAG/RAMP
LOCATION: CONCOURSE B

DATE:
SCALE:
DRAWN BY:
CHECKED BY:
EXHIBIT NO.

\\AIRMS280\Aviation\AV-Properties\01_PROPworks\01_Concessions\2014\Hudson_Bag-01.dwg Oct 28, 2014 - 9:21am